

Photometric Report

CATALOG NUMBER: EOFC-ED-100W

Friday, October 16, 2009

FILENAME: EOFC-ED-100W.IES

IESNA:LM-63-1995
[TEST] Q080701556
[DATE] 2008-07-01
[MANUFAC] FULL SPECTRUM SOLUTIONS
[LUMCAT] EOFC-ED-100W
[LUMINAIRE] 100w FULL CUTOFF WALL PACK
[LAMPCAT] INDUCTION
[LAMP] 100W INDUCTION

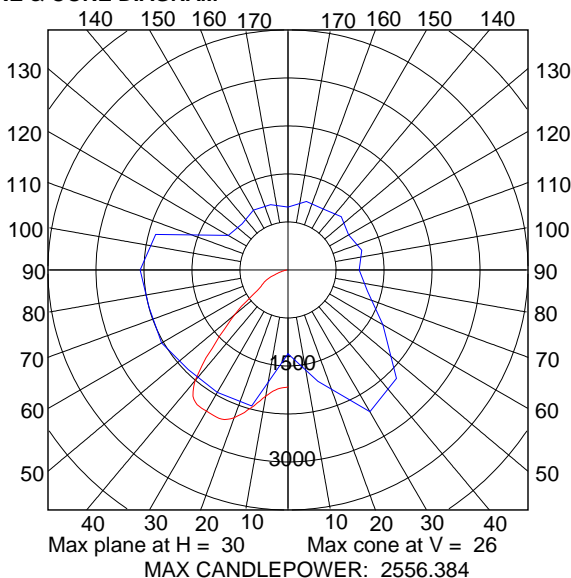
SUMMARY DATA

EFFICIENCY (Total): 51.0 %
EFFICIENCY (Down / Up): 51.0 % / 0.0 %
EFFICIENCY (Street / House): 30.1 % / 20.9 %
ROADWAY CLASSIFICATION: TYPE I, VERY SHORT
CUTOFF CLASSIFICATION: CUTOFF
LUMENS/LAMP: 8400
NO. OF LAMPS: 1
LUMINOUS OPENING: RECTANGULAR
Width: 0.28 (Meters)
Length: 0.43
Height: 0.23
INPUT WATTS: 105

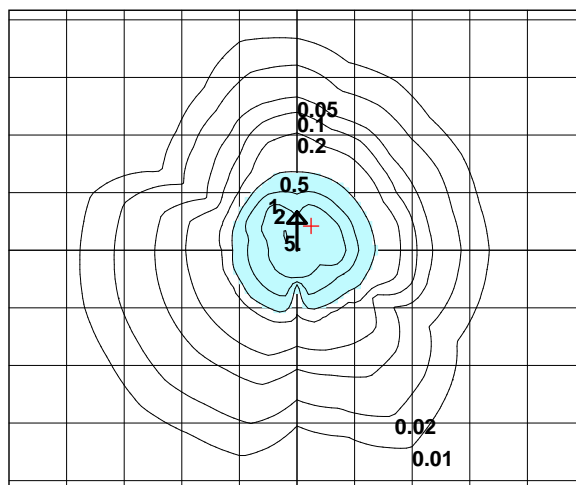
LUMINAIRE CLASSIFICATION SYSTEM (BUG RATING = B2-U1-G1)

FORWARD LIGHT	Lumens (% of Lamp Lumens)	
FL (0-30):	841	(10.0%)
FM (30-60):	1362	(16.2%)
FH (60-80):	305	(3.6%)
FVH(80-90):	20	(0.2%)
BACKLIGHT		
BL (0-30):	643	(7.7%)
BM (30-60):	807	(9.6%)
BH (60-80):	282	(3.4%)
BVH(80-90):	24	(0.3%)
UPLIGHT		
UL (90-100):	0	(0.0%)
UH (100-180):	0	(0.0%)
TRAPPED LIGHT:	4115	(49.0%)

PLANE & CONE DIAGRAM



ISO-ILLUMINANCE DIAGRAM (fc)



Mounting Height	Multiplier
10	4.000
15	1.778
20	1.000
25	0.640
30	0.444
35	0.327
40	0.250
45	0.198
50	0.160

Shade Limit:
0.5 fc.

Shaded Area:
1881 sq.ft.

+ = Point of max candela

Mounting Height = 20 Feet. Each box represents one mounting height.

Reported data calculated from manufacturer's data file, based on IESNA recommended methods.

Photometric Viewer v3.4

Photometric Report

CATALOG NUMBER: EOFC-ED-100W

Friday, October 16, 2009

FILENAME: EOFC-ED-100W.IES

This feature does not operate with this type of luminaire.

Reported data calculated from manufacturer's data file, based on IESNA recommended methods.

Photometric Viewer v3.4